

Evolution, *Glazed Porcelain*.

The beautiful variations of travertine stone reinterpreted in porcelain.



anatolia

Evolution, *Glazed Porcelain.*

Elegant and stately,
with gentle color movements.

The World of Anatolia

Passionate, dedicated and driven to bring together truly exceptional products that embody modernity, innovation and refinement. Anatolia provides its partnering customers across the world access to an extensive inventory as well as superior service, establishing itself among the largest tile and stone brands in the world.

anatolia

Colors at a glance



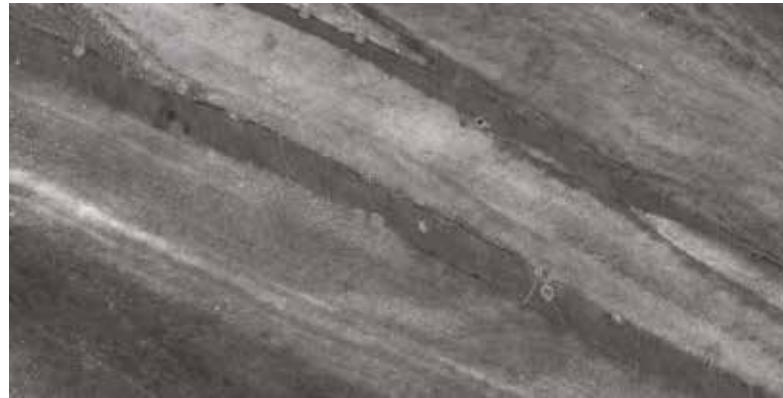
Ice



Sand



Mica

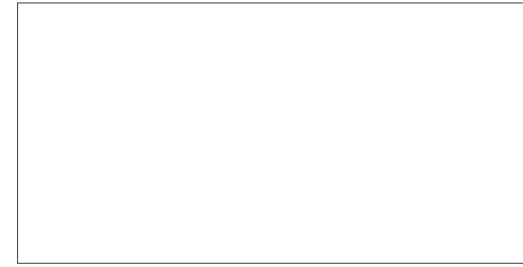


Carbon



Earth

Formats and finishes at a glance



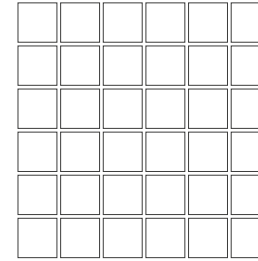
12 x 24 in / 30 x 60 cm
Pressed
Matte

Trim

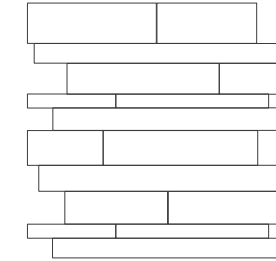


3 x 12 in / 7.1 x 30 cm
Bullnose
Matte

Mosaics



2 x 2 in / 5 x 5 cm
Mosaic
Matte



Random Strip
Mosaic
Matte



12 x 24 in / 30 x 60 cm Evolution Mica Matte Pressed Glazed Porcelain Tile



Evolution, *Ice*



12 x 24 in / 30 x 60 cm
Pressed
Matte 4500-0260-0

Trim



3 x 12 in / 7.1 x 30 cm
Bullnose
Matte 4502-0092-0

Mosaics



2 x 2 in / 5 x 5 cm
Mosaic
Matte 4501-0094-0



Random Strip
Mosaic
Matte 4501-0099-0



12 x 24 in / 30 x 60 cm image variations

Evolution, *Sand*



12 x 24 in / 30 x 60 cm
Pressed
Matte 4500-0266-0

Trim



3 x 12 in / 7.1 x 30 cm
Bullnose
Matte 4502-0094-0

Mosaics



2 x 2 in / 5 x 5 cm
Mosaic
Matte 4501-0096-0



Random Strip
Mosaic
Matte 4501-0101-0



12 x 24 in / 30 x 60 cm image variations

Evolution, *Mica*



12 x 24 in / 30 x 60 cm
Pressed
Matte 4500-0263-0

Trim



3 x 12 in / 7.1 x 30 cm
Bullnose
Matte 4502-0093-0

Mosaics



2 x 2 in / 5 x 5 cm
Mosaic
Matte 4501-0095-0



Random Strip
Mosaic
Matte 4501-0100-0



12 x 24 in / 30 x 60 cm image variations

Evolution, *Carbon*



12 x 24 in / 30 x 60 cm
Pressed
Matte 4500-0254-0

Trim



3 x 12 in / 7.1 x 30 cm
Bullnose
Matte 4502-0090-0

Mosaics



2 x 2 in / 5 x 5 cm
Mosaic
Matte 4501-0092-0



Random Strip
Mosaic
Matte 4501-0097-0



12 x 24 in / 30 x 60 cm image variations

Evolution, Earth



12 x 24 in / 30 x 60 cm
Pressed
Matte 4500-0257-0

Trim



3 x 12 in / 7.1 x 30 cm
Bullnose
Matte 4502-0091-0

Mosaics



2 x 2 in / 5 x 5 cm
Mosaic
Matte 4501-0093-0



Random Strip
Mosaic
Matte 4501-0098-0



12 x 24 in / 30 x 60 cm image variations

The Anatolia difference
Unmatched elegance and unparalleled perfection.

Anatolia reinvents shapes and design compositions through refined color palettes, innovative graphical refinements and creative reinterpretations of traditional, cultural and trend led inspirations. Meticulous care is taken to enhance a product's formation through graphical and technical improvements at every step of the development and execution process. This leads to the most exquisite and discerning tile collections.





Technical Performance
Avant-garde design and attention to detail.

The goal of Anatolia's design department was to create the utmost elegant and sophisticated product, a perfect blend of functionality and style. New technical aspects, innovative shapes, and a new color palette were designed to represent the vibrant and lively nature of metropolitan city life, inspired by its culture and history.

Packaging information

Key logistical details including item codes and product specifications.



Evolution Product & Packaging Information

	ACTUAL DIMENSIONS	THICKNESS	CARBON ITEM CODE	EARTH ITEM CODE	ICE ITEM CODE	MICA ITEM CODE	SAND ITEM CODE	LBS BOX	KGS BOX	PCS BOX	SQFT BOX	M ² BOX	BXS SKID	SQFT SKID	M ² SKID
12 x 24 in / 30 x 60 cm EVOLUTION MATTE PRESSED GLAZED PORCELAIN TILE	300 x 600 mm	8.4 mm	4500-0254-0	4500-0257-0	4500-0260-0	4500-0263-0	4500-0266-0	64.74	29.37	8	16	1.44	32	512	46.08
MOSAICS															
2 x 2 in / 5 x 5 cm EVOLUTION MATTE GLAZED PORCELAIN MOSAIC	299 x 299 mm	8.4 mm	4501-0092-0	4501-0093-0	4501-0094-0	4501-0095-0	4501-0096-0	35.56	16.13	10	10	0.89	48	480	42.91
EVOLUTION RANDOM STRIP MATTE GLAZED PORCELAIN MOSAIC	296 x 300 mm	8.4 mm	4501-0097-0	4501-0098-0	4501-0099-0	4501-0100-0	4501-0101-0	40	18.14	10	10	0.89	48	480	42.91
TRIM															
3 x 12 in / 7.1 x 30 cm EVOLUTION MATTE GLAZED PORCELAIN BULLNOSE	71 x 300 mm	8.4 mm	4502-0090-0	4502-0091-0	4502-0092-0	4502-0093-0	4502-0094-0	16.06	7.28	20	N/A	N/A	119	2380	PCS

Technical information

Tile collection performance based on industry standards.

Technical Information

	WATER ABSORPTION	ANSI / ISO - (%)	< 0.5%
	ABRASION RESISTANCE	ANSI / ISO	CLASS 4
	SCRATCH HARDNESS	ANSI / ISO - (Mohs)	7
	BREAKING STRENGTH	ANSI - (lbf) ISO - (N)	≥300 ≥1300
	SHADE VARIATION		V3
	SLIP RESISTANCE	ANSI - DCOF (WET) ISO - R VALUE	MATTE ≥0.50 MATTE R(-)
	CHEMICAL RESISTANCE	ANSI / ISO	CLASS A
	STAIN RESISTANCE	ANSI / ISO	CLASS A / CLASS 5
	FROST RESISTANCE	ANSI / ISO	PASS

Test values are based on ANSI / ISO standards according to: ANSI A137.1 - Porcelain tile P1 Class, ISO 13006 - G - Bia Group, En 14411 - G - Bia Group. Variances in test values can occur in different production lots.

Usage recommendations

Anatolia's recommendations for suitable applications.

Usage Recommendations*		MATTE GLAZED PORCELAIN	
APPLICATION		WALL	FLOOR
INTERIOR	RESIDENTIAL	•	•
	COMMERCIAL	•	•
	HEAVY COMMERCIAL	•	
EXTERIOR	RESIDENTIAL / COMMERCIAL	•	

* These recommendations are not defined by ANSI/ISO standards.

The World of Anatolia

We are a constellation of people and places. Get in touch.

CANADA
TORONTO HEAD OFFICE,
SHOWROOM AND DISTRIBUTION
CENTER

8300 Huntington Road
Vaughan, ON, L4H 4Z6
Canada

info@anatoliatile.com

Tel: +1 905 771 3800
Toll free tel: 1 877 311 3434
Fax: +1 905 771 6300
Fax: +1 866 324 1838

USA
SAVANNAH OFFICE, SHOWROOM
AND DISTRIBUTION CENTER
Anatolia Tile + Stone (USA) Inc.
Tel: +1 877 311 3434

SAVANNAH WAREHOUSE #1
202 International Trade Pkwy
Port Wentworth, GA, 31407
USA
Tel: +1 912 438 5167

SAVANNAH WAREHOUSE #2
250 International Trade Pkwy
Port Wentworth, GA, 31407
USA
Tel: +1 912 438 5167

TURKEY
IZMIR OFFICE, SHOWROOM
AND DISTRIBUTION CENTRE

Aliağa Organize Sanayi Bölgesi
Çoraklar Mah. 5000 Sk. No: 34
35800 Aliağa, İzmir,
Türkiye
Tel: +90 232 520 7300

REGIONAL OFFICES
TURKEY
Oguzhan Mah. Hoca Ahmet Yesevi Cad.
Ada Plaza No:7 Kat:3 Daire:19
15300 Bucak, Burdur,
Türkiye

CHINA
Room 517 Yi Shu Da Lou Ji Hua 4 Road
Chan Cheng District, Foshan City
Guang Dong Province, 528000
China

INDIA
206 - Pacific Business Park
Mahendra Nagar (Part)
8/A - National High Way
Morbi, Gujarat, 363642
India

USA
Anatolia Tile + Stone (USA) Inc.
131 Crosslake Park Dr., Suite 203
 Mooresville, NC, 28117
USA
Tel: +1 877 311 3434

Credits

ART DIRECTION
AND GRAPHIC DESIGN
Juma

Partnerships and Associations



Discover more at
anatoliatile.com

